

## TYPE FA – 400



### DESCRIPTION

The **FA** series grilles have fixed blades at 45 °C and designed to take in or expel air to the environment. Suitable for outdoor installation on walls, ducts and external surfaces where protection against severe weather conditions (rain, wind) is needed.

Their main characteristics are:

- Fixed grilles at 45 °C, ensuring protection against severe weather conditions.
- Mesh on the back of the inner side to prevent the entry of insects and small objects.
- Seal on the back of the frame for **FA-400** grilles so the perimeter in contact with the wall is airtight. Available only for the 32 mm width frame.

### NOMINAL SIZES

The **FA-400** grilles are available in any combination of dimensions to meet the needs of the project.

We highlight that:

- The order dimensions are the dimensions of the **opening**.
- The blades are placed parallel to the **first** dimension of the grille.

### ACCESSORIES

- Opposed blades volume damper, adjustable by an easily accessible key. **(-D)**
- Dust or grease filter. The dust filters are available in white **VILEDON** or net black **FCU** type. Grease filters are metallic. (See relevant brochure). **(-F)**
- Mesh screen for the restraint of foreign objects, insects, etc. **(-M)**
- The **FA-400** grilles can be accessible **(-A)**, with or without filter and filter case. (See relevant brochure).
- The **FA-400** grilles are available with 32 mm or 19 mm width frame.

## EXTERNAL AIR GRILLES – WEATHER GRILLES

### ACCESSORIES

- Opposed blades volume damper, adjustable by an easily accessible key. **(-D)**
- Dust or grease filter. The dust filters are available in white **VILEDON** or net black **FCU** type. Grease filters are metallic. (See relevant brochure). **(-F)**
- Mesh screen for the restraint of foreign objects, insects, etc. **(-M)**
- The **FA-400** grilles can be accessible **(-A)**, with or without filter and filter case. (See relevant brochure).
- The **FA-400** grilles are available with 32 mm or 19 mm width frame.

### INSTALLATION – FIXING

Each **FA-400** grille frame has counter punched holes and is delivered with flat-head, self-drilling screws, powder coated in the same RAL colour as the grille. For concealed installation, the frame has no holes.

The **FA-400-C** grilles have no holes for concealed installation.

### MATERIALS

Frame and blades: Extruded aluminium anodized in matt silver or powder coated in RAL colour.

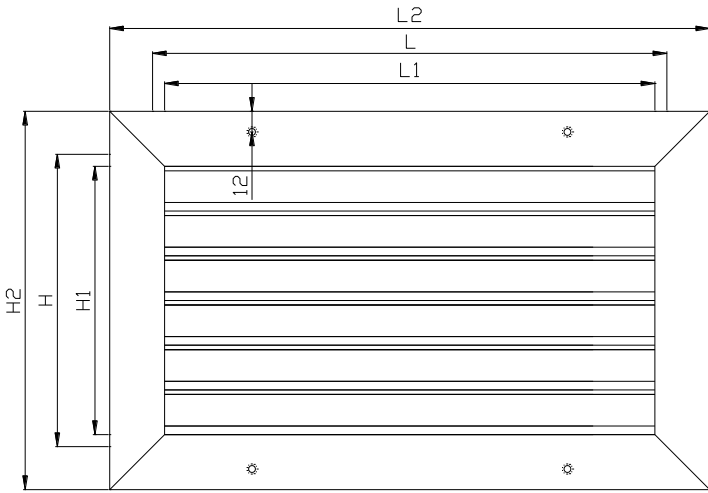
Frame seal: «Ω» type PVC. (Only available for 32 mm width frame).

Volume damper: Aluminium.

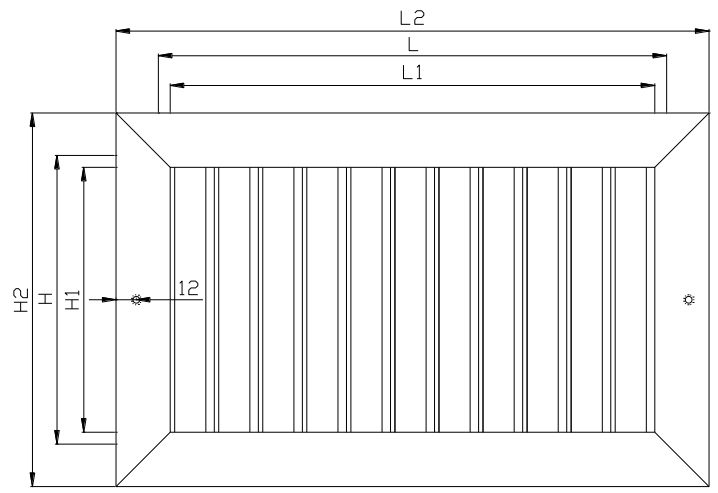
Screws: Galvanized steel (DIN 7504).

### SPECIFICATION TEXT

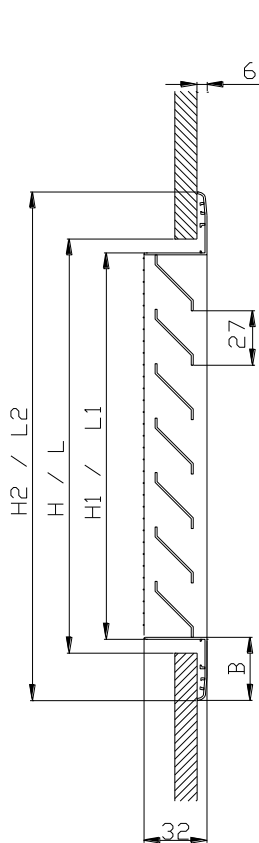
Weather resistant air grille for protection against severe weather conditions and foreign objects, consisting of fixed blades at 45° from anodized aluminium. The grille is suitable for outdoor installation. With mesh screen.



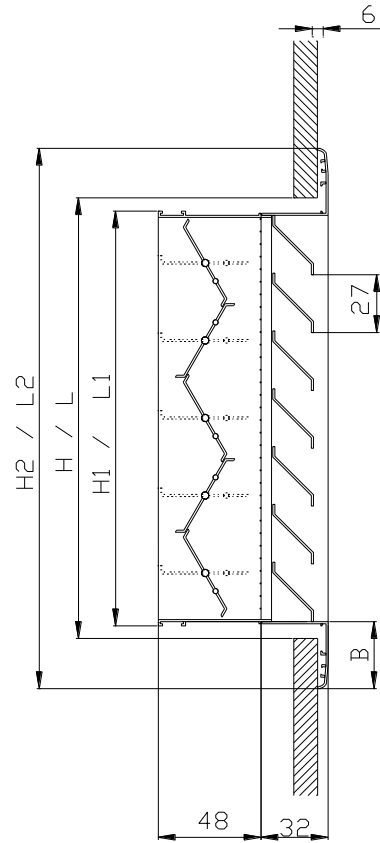
FA-400 – VIEW (L x H)



FA-400 – VIEW (H x L)



FA-400 – SECTION



FA-400-D – SECTION WITH DAMPER

- L : Nominal length – horizontal dimension  
H : Nominal height – vertical dimension  
L<sub>1</sub> : Length  $L_1 = L - 12\text{mm}$  to  $-16\text{mm}$   
H<sub>1</sub> : Height  $H_1 = H - 12\text{mm}$  to  $-16\text{mm}$   
L<sub>2</sub> : Overall length  $L_2 = L_1 + 2B$   
H<sub>2</sub> : Overall height  $H_2 = H_1 + 2B$   
B : Frame width. Typical 32 mm. Optional 19 mm.

## NOTES

1. When ordering, refer first to the dimension parallel to the blades, i.e. for horizontal blades length is specified first and for vertical blades height is specified first.
2. Volume damper is available for all types.
3. The grille comes with counter punched holes and self-drilling screws in the same RAL colour.
4. The number of holes are two (one on the right and one on the left) for grilles up to 250 mm, and four (two on the top and two on the bottom) for grilles over 300 mm.