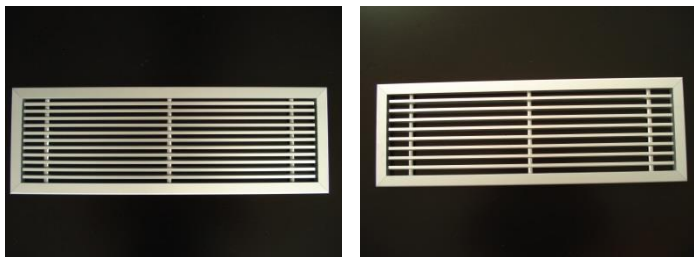


TYPE

LF - 202/LF 212 / LF - 202-2 / LF - 212-2

LINEAR AIR GRILLE



DESCRIPTION

The linear air grilles of **LF-202**, **LF-212** series are suitable for installation on walls, ducts and false ceilings. The grilles can be used for both supply and extraction air applications.

Their main characteristics are:

- The **LF-202** grilles have a 12 mm blade pitch, while the **LF-212** grilles have a 16 mm blade pitch.
- Blades constructed from extruded aluminium with braced triangular end, inclined by 15°. The types **LF-202-2** and **LF-212-2** are constructed with inclined blades at opposite direction, so that the air stream is distributed in two way pattern, at any desired ratio.
- Air-tight seal around the rear side perimeter in contact, to prevent air leakage and blackening of the false ceiling. Available for the 32 mm width frame.
- The grilles can be ordered with no frame for enhanced embodiment on the mounting surface.

NOMINAL SIZES

The **LF** grilles are available in any combination of dimensions to meet the needs of the project.

We highlight that:

- The order dimensions are the dimensions of the **opening**.
- The blades are placed parallel to the **first** dimension of the grille.

ACCESSORIES

- Opposed blades volume damper, adjustable by an easily accessible key. **(-D)**
- Dust or grease filter. The dust filters are available in white **VILEDON** or net black **FCU** type. Grease filters are metallic. (See relevant brochure). **(-F)**
- The grilles can be accessible **(-A)**, with or without filter and filter case. (See relevant brochure).
- Equalizing grid. **(-E)**
- Mesh 6 mm x 6 mm for the constraint of foreign objects, etc. **(-M)**
- The grilles are available with 32 mm or 19 mm or 8 mm width frame.
- All types are available without frame. **(C type)**.
- The grilles are available with hinged access door for FCU controllers (Types **T** and **TT**)

INSTALLATION – FIXING

Each grille frame has counter punched holes and is delivered with flat-head, self-drilling screws, powder coated in the same RAL colour as the grille. For concealed installation, the frame has no holes. For type C, a border can be placed on the grilles' perimeter.

AIR FLOW CONTROL

The volume damper is easily regulated by a key or a regulating screw.

In the **LF-202**, **LF-212** grilles the air pattern can be adjusted from +15° to -15° by rotating the grille by 180°.

MATERIALS

Frame and blades: Extruded aluminium anodized in matt silver or powder coated in RAL colour.

Support tubes: Aluminium tubes, Φ 8 mm, placed transverse every 200 to 300 mm.

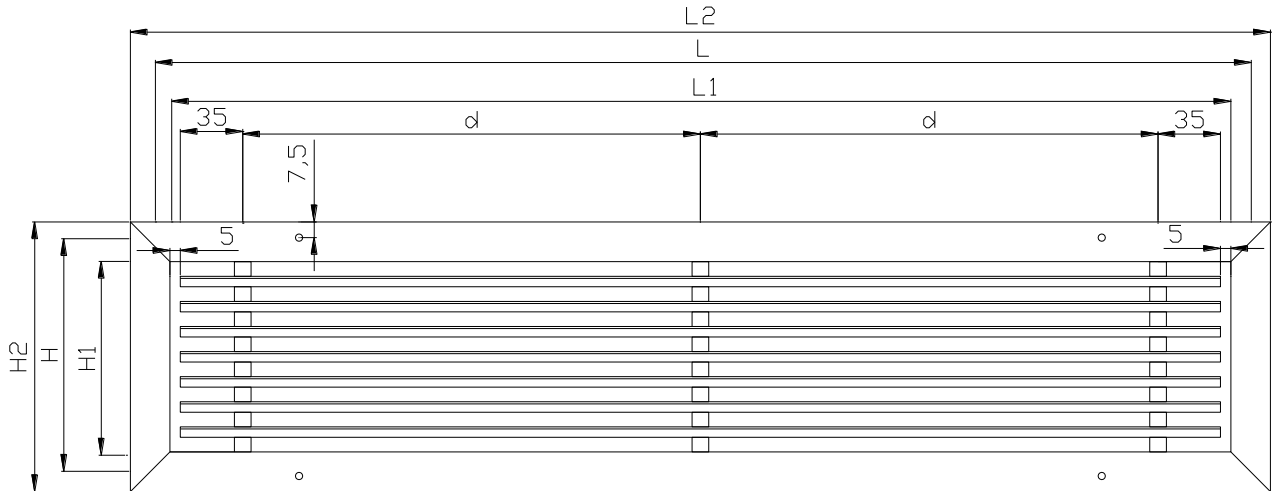
Frame seal: «Ω» type PVC. (Only available for 32 mm width frame).

Volume damper: Aluminium.

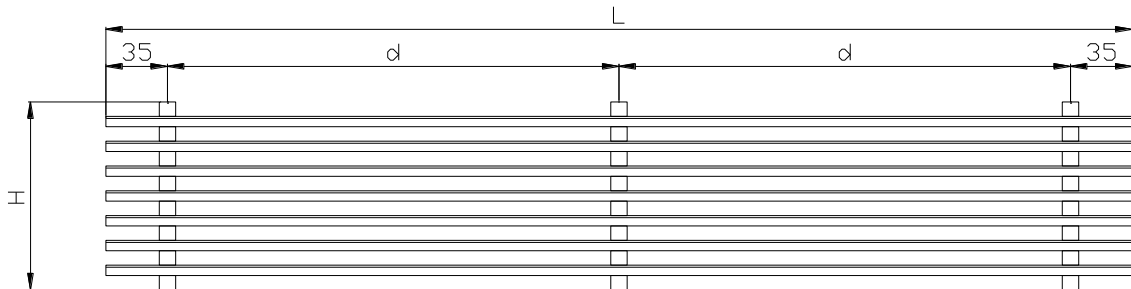
Screws: Galvanized steel (DIN 7504).

SPECIFICATION TEXT

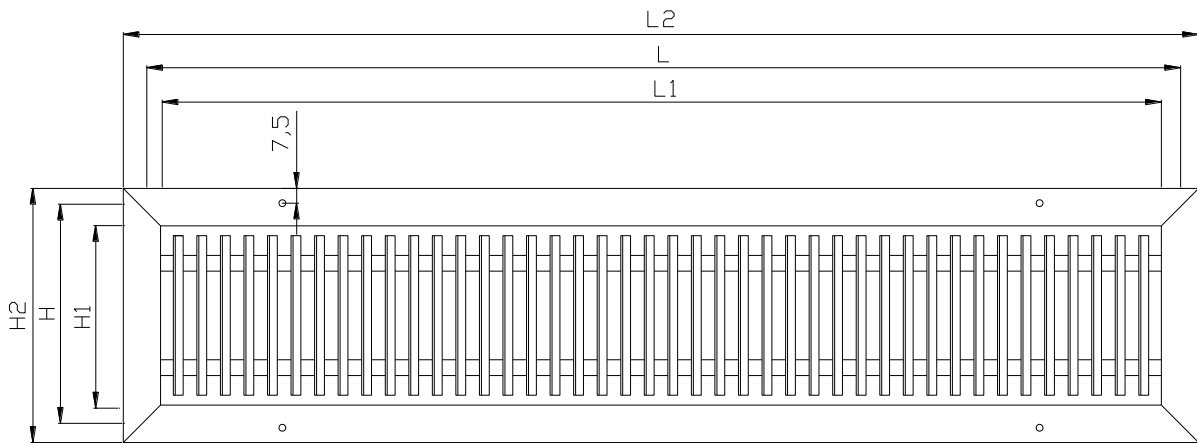
Supply or extract linear air grille of rectangular shape, consisting of fixed horizontal blades with braced triangular end, inclined by 15°, from anodized aluminium. With optional volume damper and/or equalizing grid.



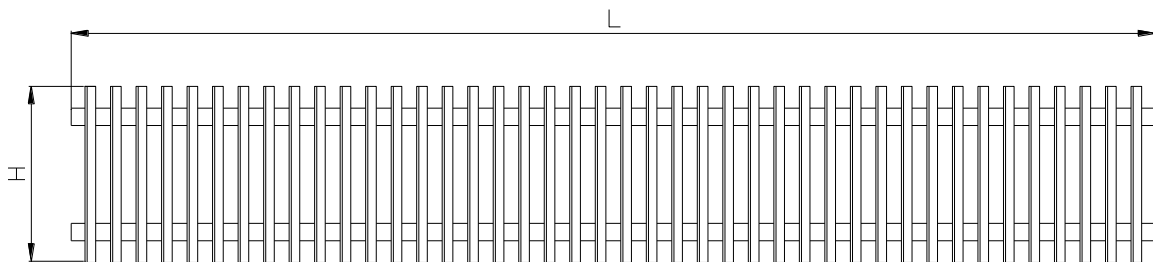
LF-202/212 – VIEW (L x H)



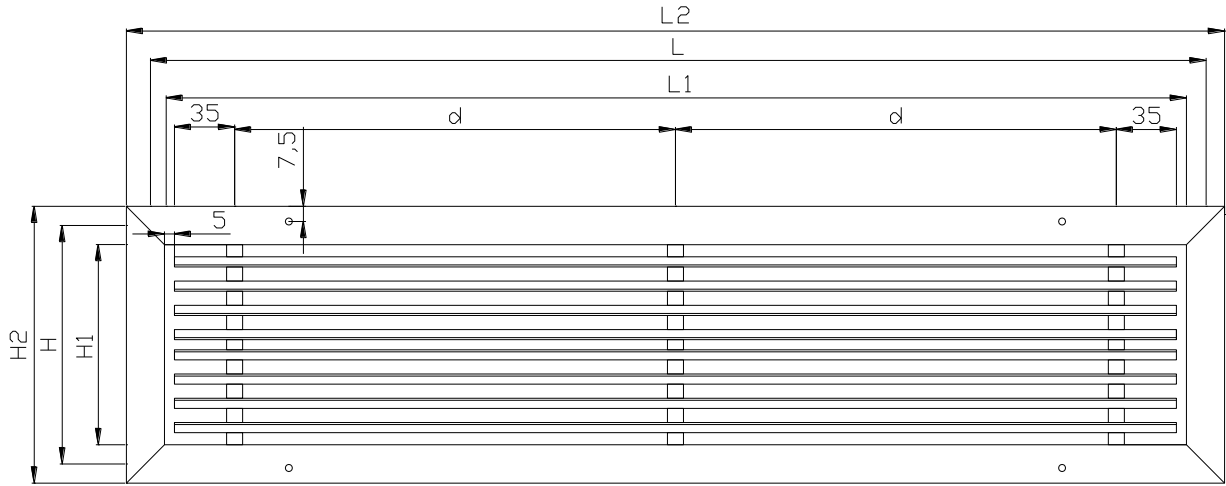
LF-202/212-C – VIEW (L x H)



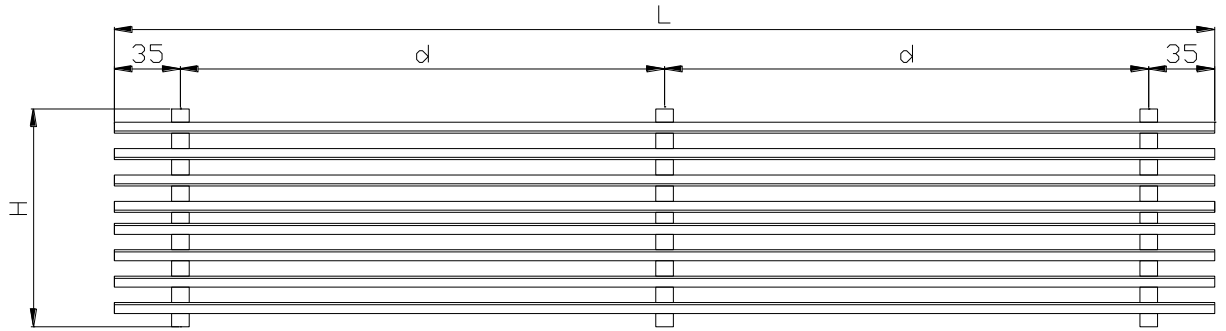
LF-202/212 – VIEW (H x L)



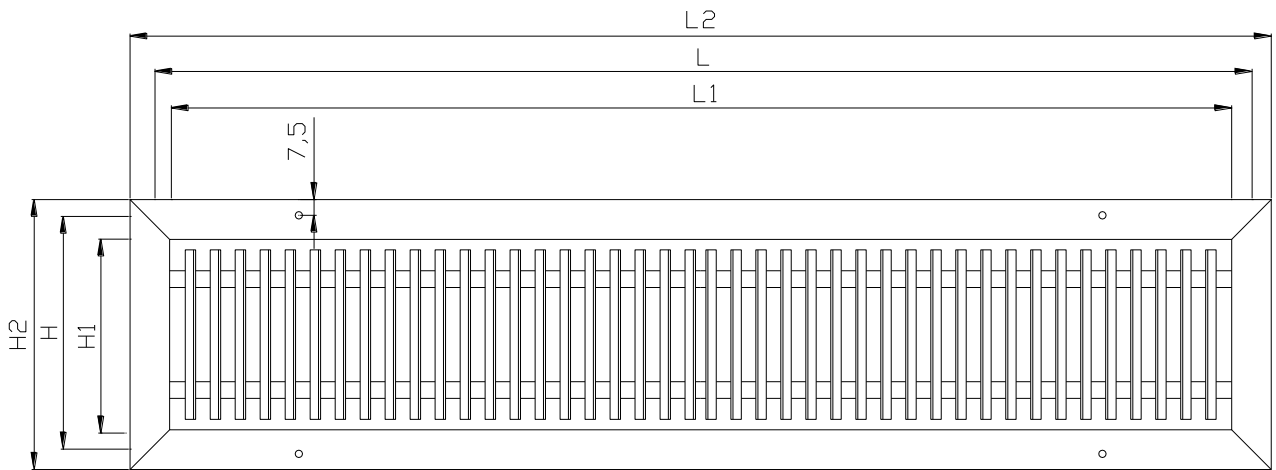
LF-202/212-C – VIEW (H x L)



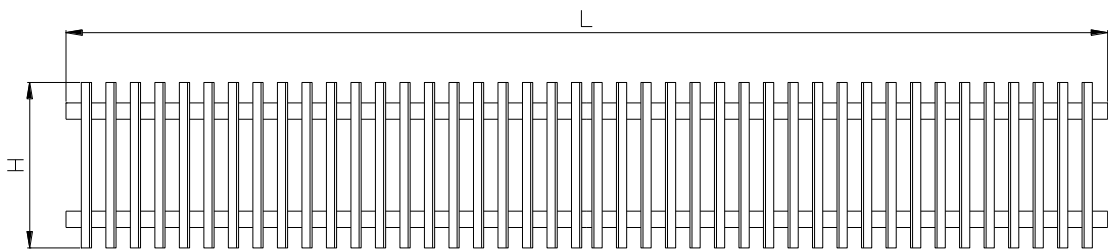
LF-202/212-2 – VIEW (L x H)



LF-202/212-2-C – VIEW (H x L)

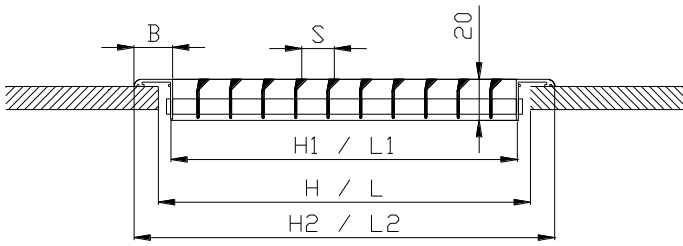


LF-202/212-2 – VIEW (H x L)

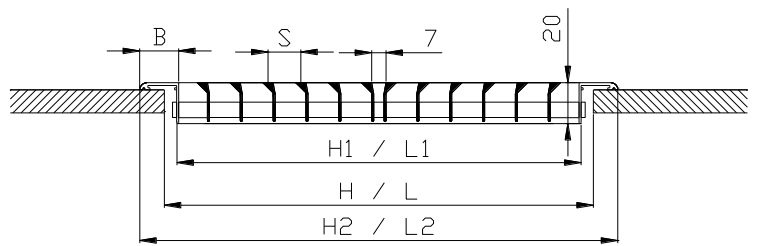


LF-202/212-2-C – VIEW (H x L)

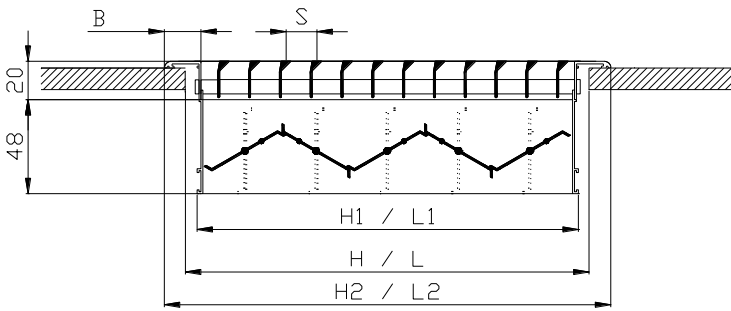




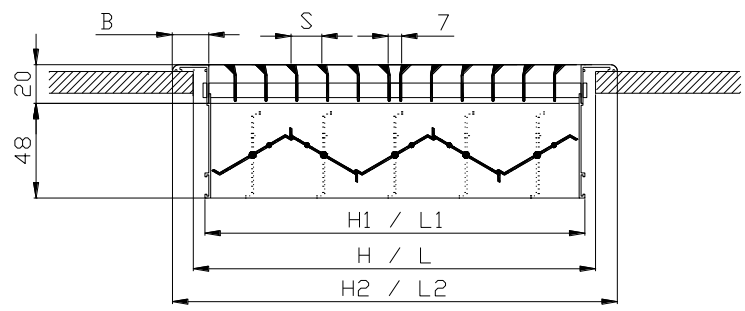
LF-202/212 – SECTION



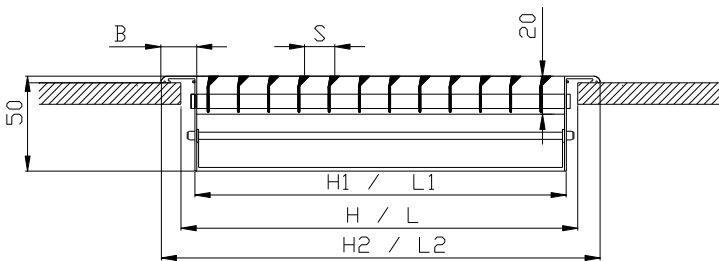
LF-202/212-2 – SECTION



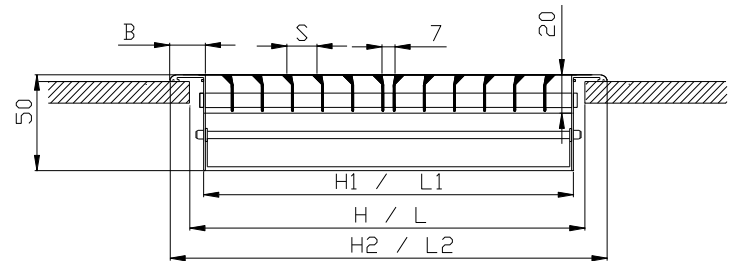
LF-202/212-D – SECTION WITH DAMPER



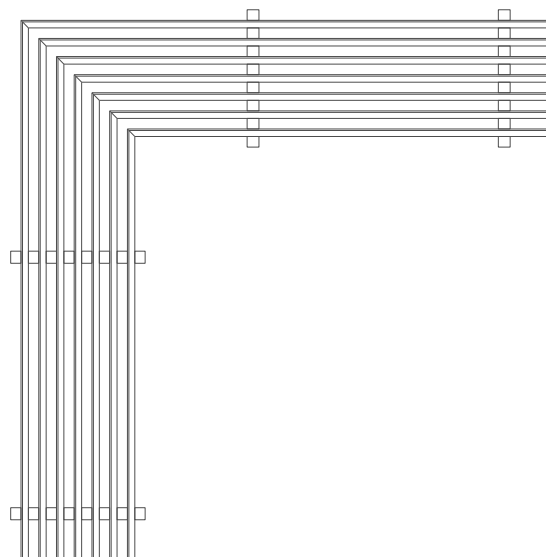
LF-202/212-2-D – SECTION WITH DAMPER



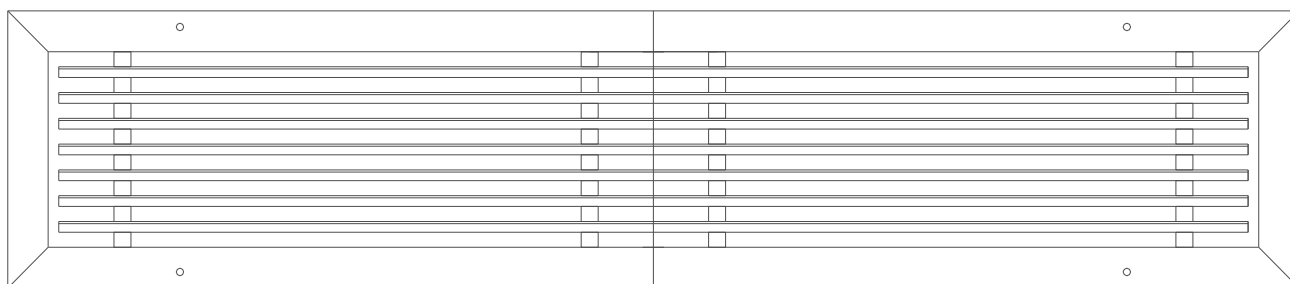
LF-202/212-E – SECTION WITH GRID



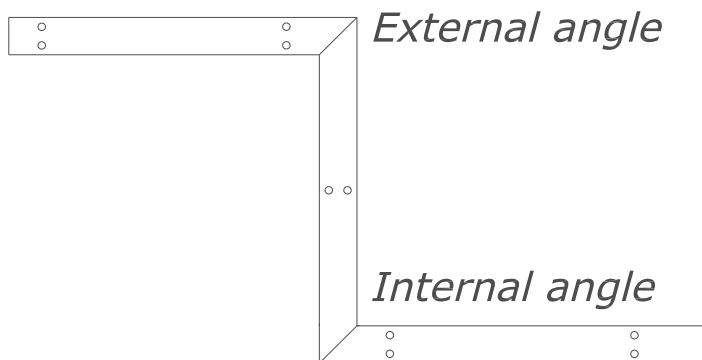
LF-202/212-2-E – SECTION WITH GRID



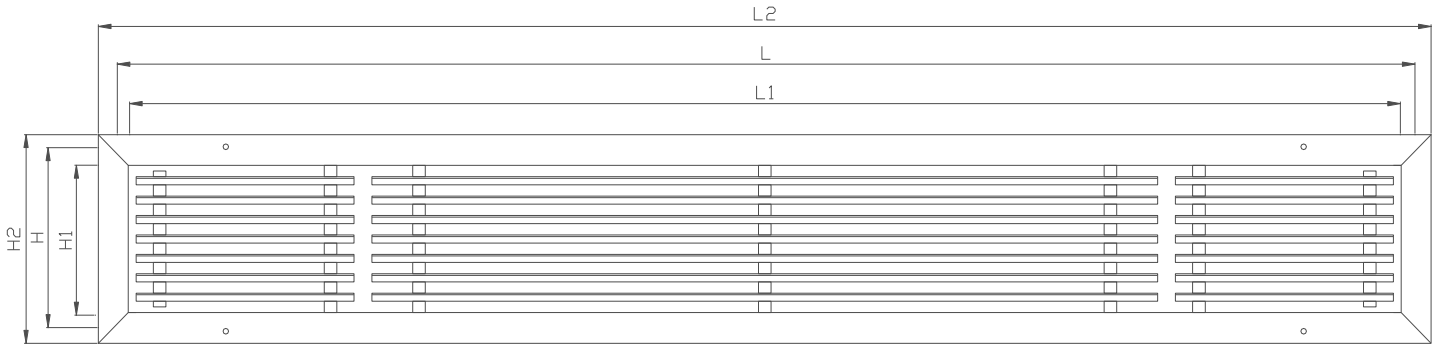
LF-202/212 – ANGLE, TOP VIEW



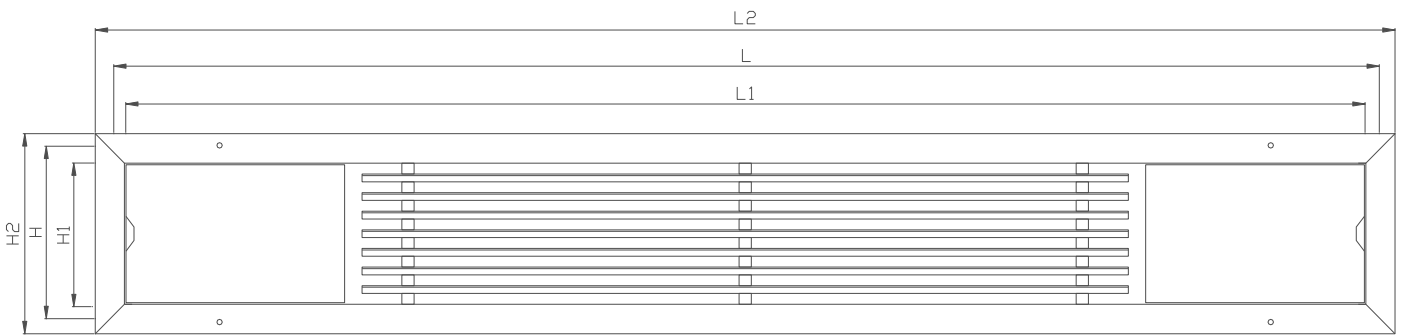
LF-202/212 – ANGLE, VIEW (FRONTAL INSTALLATION)



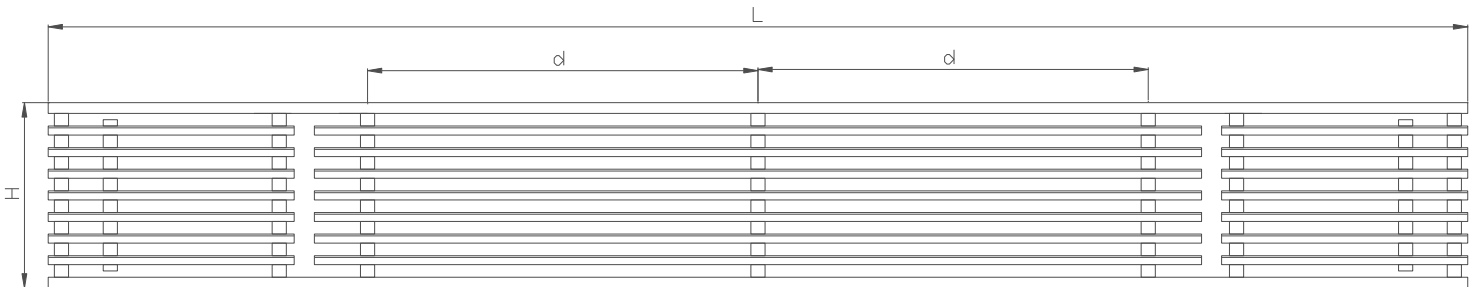
LF-202/212 – ANGLE, SIDE VIEW (FRONTAL INSTALLATION)



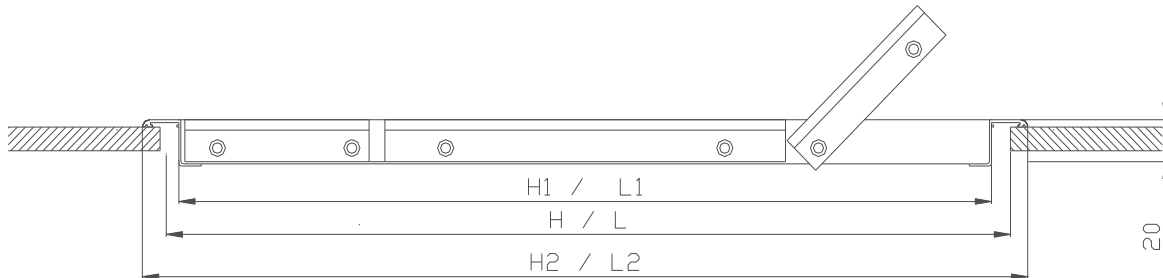
LF-202/212-TT – VIEW



LF-202/212-TT – VIEW



LF-202/212-C-TT – VIEW



LF-202/212-TT – SECTION

- L : Nominal length – horizontal opening
H : Nominal height – vertical opening
L₁ : Length $L_1 = L - 10\text{mm}$ for B = 32mm or 19mm. For B = 8mm, $L_1 = L - 5\text{mm}$
H₁ : Height $H_1 = H - 10\text{mm}$ for B = 32mm or 19mm. For B = 8mm, $H_1 = H - 5\text{mm}$
L₂ : Overall length $L_2 = L_1 + 2B$
H₂ : Overall height $H_2 = H_1 + 2B$
B : Frame width. Typical 32 mm. Optional 19 mm or 8 mm.
d : Distance between support tubes. d = 200 to 300 mm depending on the grilles' dimensions.
S : Blade pitch. Typical 12 mm. Optional 16 mm.

NOTES

1. When ordering, refer first to the dimension parallel to the blades, i.e. for horizontal blades length is specified first and for vertical blades height is specified first.
2. Volume damper is available for all types.
3. The grille comes with counter punched holes and self-drilling screws in the same RAL colour.
4. The number of holes are two (one on the right and one on the left) for grilles up to 250 mm, and four (two on the top and two on the bottom) for grilles over 300 mm.
5. The 8 mm width frame has no holes.