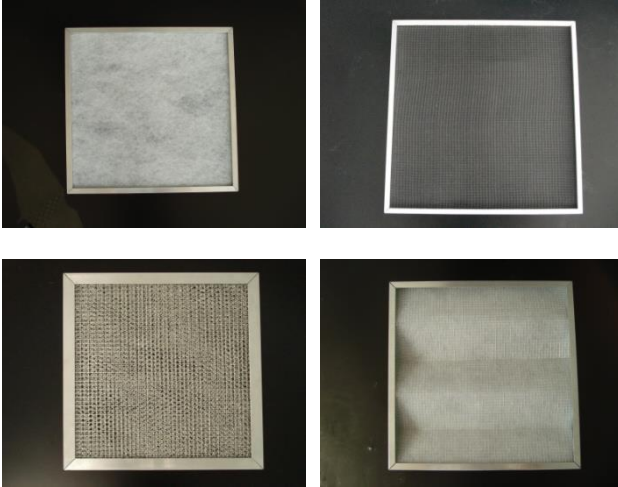


TYPE F-FL-FC-FR-FG-FZ

FILTERS



DESCRIPTION

The filter series **F**, **FC**, **FR**, **FG**, **FZ** are suitable for installation in all types of air grilles and diffusers. They are also suitable for Air Handling Units, Fan Coil Units, as well as intermediate sections in air ducts.

TYPE F FILTER

White Viledon type filter, 10 mm width, type **G2 (EU2)** and certified by EN 779, moisture resistant, made of synthetic polyester fiber. Available in the following types:

F-5 MM

Casing made of bent galvanized steel, with mesh screen on both sides; filter compressed to 5 mm.

F-10

Casing made of extruded aluminium of 10 mm width; the filter is placed by means of elastic band for easy replacement.

F-15

Casing made of extruded aluminium of 15 mm width; the filter is placed by means of elastic band for easy replacement.

F-15 MM

Casing made of extruded aluminium of 15 mm width, with mesh screen on both sides. Suitable for air flow rates with of speed.

TYPE FC FILTER

Thin filter of 0.5 mm width, netting black, washable and of low static pressure. The filter is suitable for Fan Coil Units. Available in the following types:

FC-5 MM

Casing made of bent galvanized steel, with mesh screen on both sides; filter width 5mm.

FC-10

Casing made of extruded aluminium of 10 mm width; the filter is placed by means of elastic band for easy replacement.

FC-15

Casing made of extruded aluminium of 15 mm width; the filter is placed by means of elastic band for easy replacement.

TYPE FR FILTER

RICOCELL type filter made of cellular, black foam plastic, water resistant, 10 mm width. Available in the following types:

FR-5 MM

Casing made of bent galvanized steel, with screen on both sides; filter compressed to 5 mm.

FR-10

Casing made of extruded aluminium of 10 mm width; the filter is placed by means of elastic band for easy replacement.

FR-15

Casing made of extruded aluminium of 15 mm width; the filter is placed by means of elastic band for easy replacement.

FR-15 MM

Casing made of extruded aluminium of 15 mm width, with mesh screen on both sides. Suitable for air flow rates of high speed.

TYPE FG FILTER

Filter made of cellular aluminium sheets in successive placement, depending on the needs of the installation. The FG series filters are suitable for installations where there is moisture or steam from water, oil or grease. Available in the following types:

FG-15 MM

Casing made of extruded aluminium of 15 mm width, with mesh screen on both sides. Suitable for air flow rates with of speed.

FG-20+

Casing made of bent galvanized steel available in various widths, depending on the number of successive filters.

TYPE FZ CASING

Casing made of galvanized steel, suitable for installation in air ducts or Air Handling Units, with a Z-line provision for the filters. Available in various widths to meet the needs of the installation. The Z-line provision succeeds higher level of restraint in the smallest possible intersection. The casing has Z-line screen on both sides. Available for all types of filters.

NOMINAL SIZES

All filters are available in any combination of dimensions to meet the needs of the project.

We highlight that:

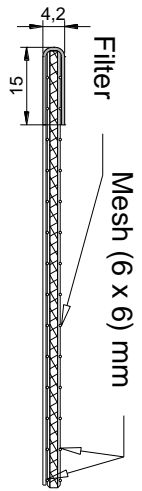
- For installation in filter case, the given dimensions are the **grille/diffuser** dimensions where the filter is placed.
- For installation in air duct, the given dimensions are the dimensions of the opening.

ACCESSORIES

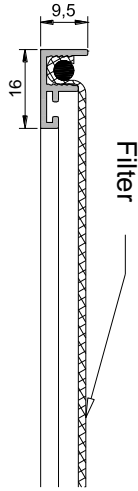
Filter case: Extruded aluminium frame placed in the duct for the installation and restraint of the filter, facilitating the washing and/or replacement of the filter.



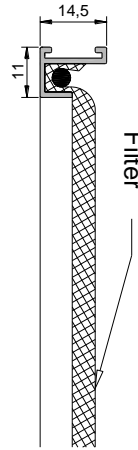
**TYPE 5MM
(5 mm)**



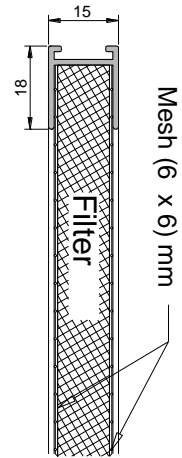
**TYPE 10
(10 mm)**



**TYPE 15
(15 mm)**

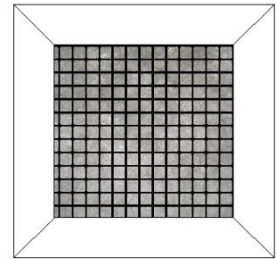
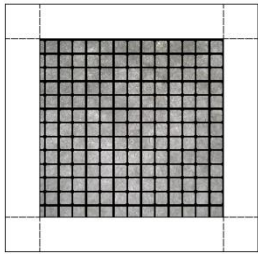


**TYPE 15MM
(15 mm)**

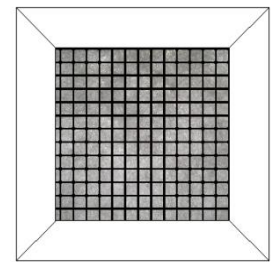
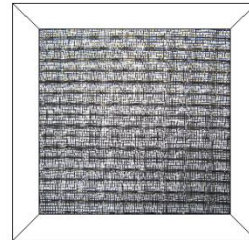
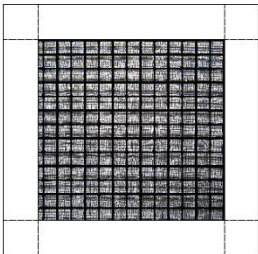


**FILTERS – GENERAL
SECTION**

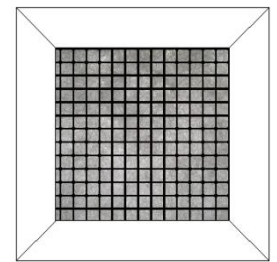
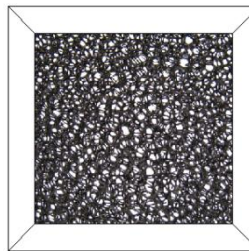
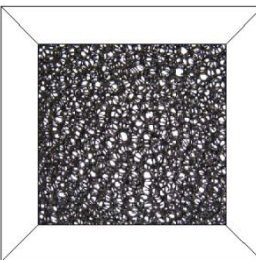
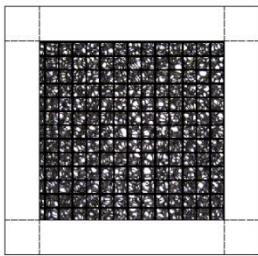
**F TYPE – VIEW
(VILEDON)**



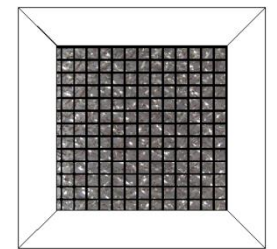
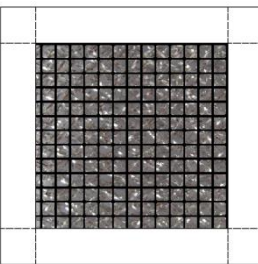
**FC TYPE – VIEW
(FCU)**

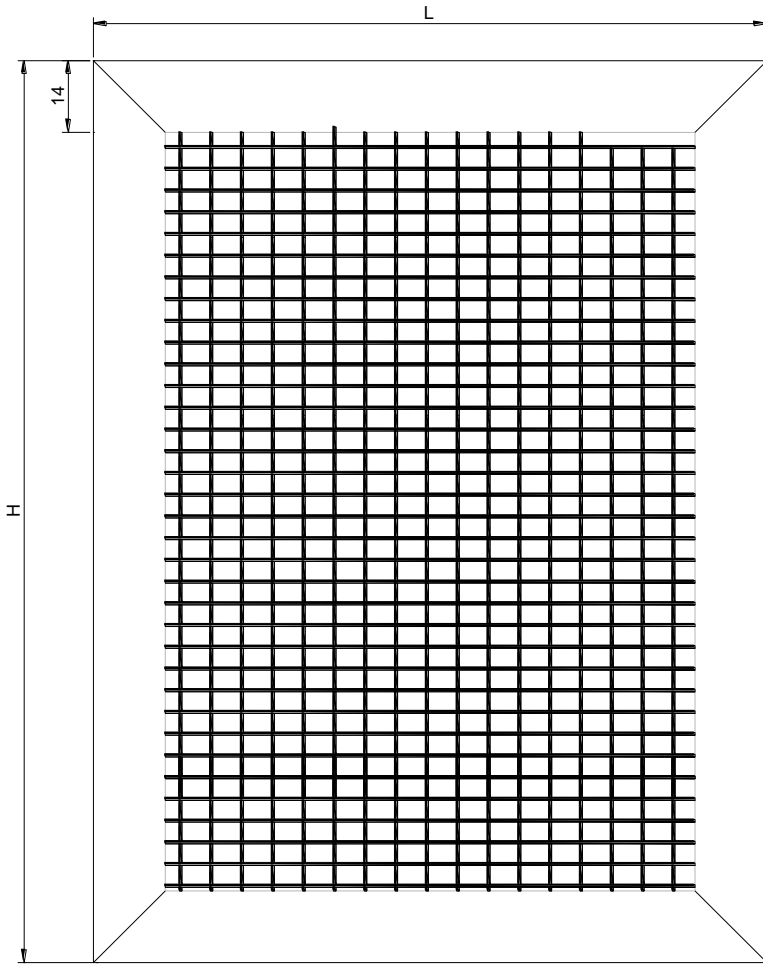


**FR TYPE – VIEW
(RICOCELL)**

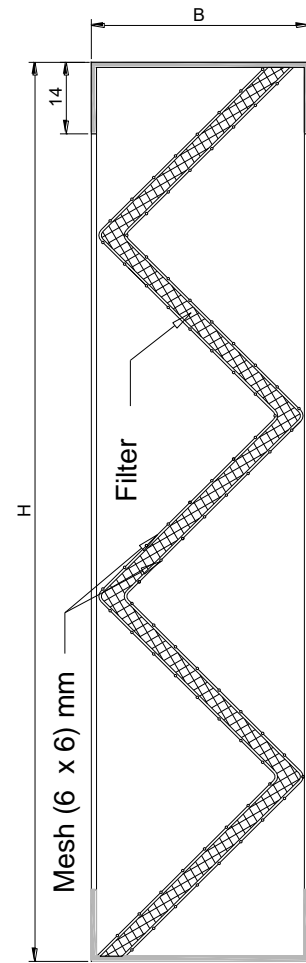


**FG TYPE – VIEW
(METAL FILTER)**





FZ – VIEW



FZ – SECTION

- L : Nominal length
- H : Nominal height
- B : Casing depth

NOTES

1. When ordering the **FZ** type, mention all three dimensions, as well as the number of internal angles of the filter.