

## TYPE LF – 203



### DESCRIPTION

The **LF-203** linear air grilles are designed to be used for floor installation, parallel to windows and slide doors. They are suitable for supply and extraction air applications.

Their main characteristics are:

- The **LF-203** grilles are constructed with a 12 mm or a 16 mm blade pitch.
- Wide blades for increased durability against loads. The **LF-203** series is specially designed for floor installation. The blades are placed vertical to the surface of the grille so that the air stream comes out parallel to the vertical surface (windows, doors, walls).

### NOMINAL SIZES

The **LF** grilles are available in any combination of dimensions to meet the needs of the project.

We highlight that:

- The order dimensions are the dimensions of the **opening**.
- The blades are placed parallel to the **first** dimension of the grille.

## FLOOR LINEAR AIR GRILLE

### ACCESSORIES

- Opposed blades volume damper, adjustable by an easily accessible key. **(-D)**
- Dust or grease filter. The dust filters are available in white **VILEDON** or net black **FCU** type. Grease filters are metallic. (See relevant brochure). **(-F)**
- Equalizing grid. **(-E)**
- Mesh 6 mm x 6 mm for the constraint of foreign objects, etc. **(-M)**
- The grilles are available with 27 mm width frame, with specially designed edges in order not to obstruct walking.
- All types are available without frame. **(C type)**.

### INSTALLATION – FIXING

Each grille is designed for concealed installation.

### AIR FLOW CONTROL

The volume damper is easily regulated by a key or a regulating screw.

### MATERIALS

Frame and blades: Extruded aluminium anodized in matt silver or powder coated in RAL colour.

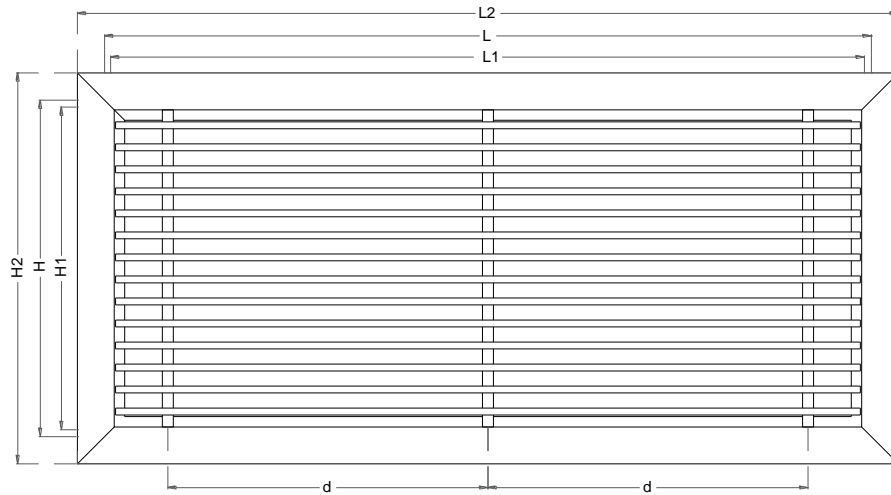
Support bars: Aluminium bars of 3 mm width placed transverse every 200 to 300 mm.

Frame seal: «Ω» type PVC.

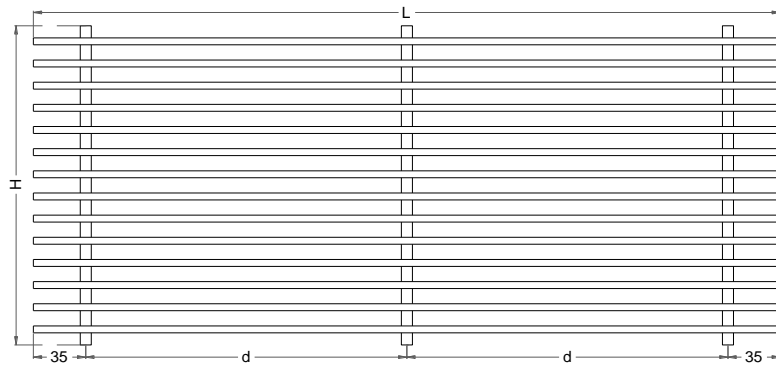
Volume damper: Aluminium.

### SPECIFICATION TEXT

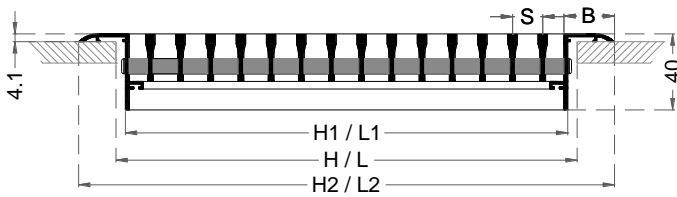
Supply or extract air grille of rectangular shape, consisting of fixed aluminium blades. The grille is suitable for floor installation, designed for load bearing applications. With optional volume damper and/or equalizing grid.



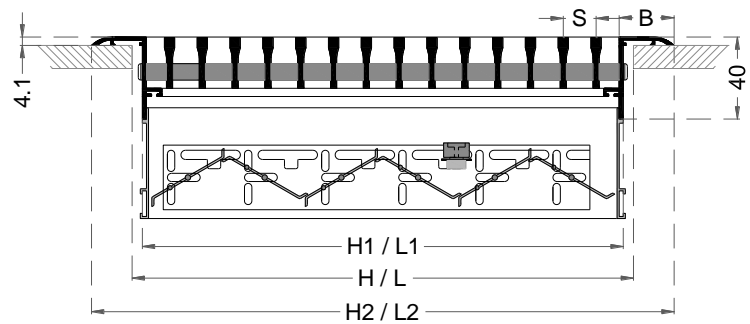
LF-203 - VIEW



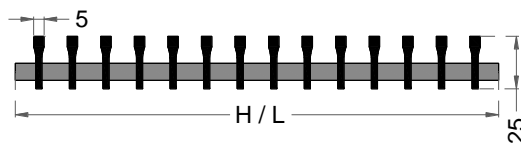
LF-203-C - VIEW



LF-203 - SECTION



LF-203-D - SECTION WITH DAMPER



LF-203-C - SECTION



- L : Nominal length – horizontal opening  
H : Nominal height – vertical opening  
L<sub>1</sub> : Length  $L_1 = L - 10\text{mm}$  for B = 32mm or 19mm. For B = 8mm,  $L_1 = L - 5\text{mm}$   
H<sub>1</sub> : Height  $H_1 = H - 10\text{mm}$  for B = 32mm or 19mm. For B = 8mm,  $H_1 = H - 5\text{mm}$   
L<sub>2</sub> : Overall length  $L_2 = L_1 + 2B$   
H<sub>2</sub> : Overall height  $H_2 = H_1 + 2B$   
B : Frame width. Typical 27 mm.  
d : Distance between support tubes. d = 200 to 300 mm depending on the grilles' dimensions.  
S : Blade pitch. Typical 12 mm. Optional 16 mm.

## NOTES

1. When ordering, refer first to the dimension parallel to the blades, i.e. for horizontal blades length is specified first and for vertical blades height is specified first.
2. Volume damper is available for all types.
3. The grille has no holes on the frame.